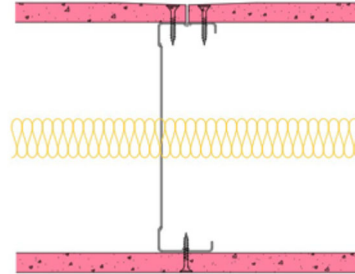


## 146-B-55(25) - SPEEDLINE System Data Sheet - Version V1 (24-10-23)

SPEEDLINE 146mm 'C' Stud Partition @600mm Ctrs, with BG Gyproc 12.5mm FireLine each side, 25mm APR



### System Performance Breakdown

Fire Resistance:

BS476 Part 22:1987:

Test Ref & Date or Applied Ref & Report:

Max Height:

Thickness:

Duty Grade: BS 5234: Part 2:1992:

Sound Insulation:

**30/30 Minutes** (Integrity/Insulation).

**BTC 17439F - BRE Report P102396-1011A**

**Refer to Speedline Specification Clause**

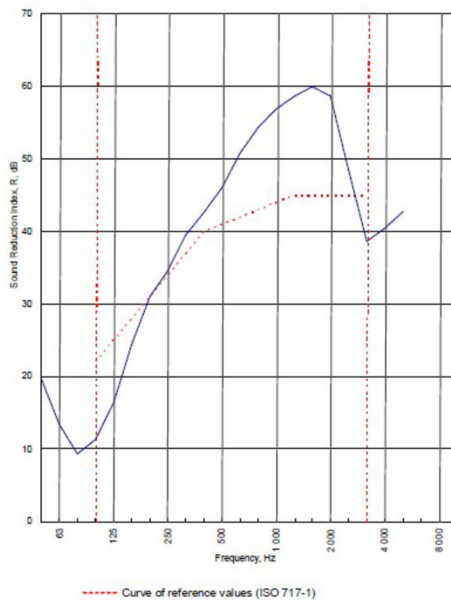
**173 mm.** (At Base Track, Excluding Finishes)

**Medium - Annexes A-F**

**41  $R_w$ dB**, Date Tested or Assessed Against - 70-B-51(25)

Test Code:  
**H17484AA**  
Test Date:  
**14/07/2011**

Freq. Hz	R dB
50	19.9
63	13.5
80	9.3
100	11.3
125	16.4
160	24.5
200	31.0
250	34.5
315	39.5
400	42.6
500	46.0
630	50.8
800	54.4
1 000	56.9
1 250	58.6
1 600	59.9
2 000	58.6
2 500	48.4
3 150	38.6
4 000	40.4
5 000	42.8
6 300	
8 000	
10 000	



Rating according to BS EN ISO 717-1:1997	<b><math>R_w</math> (C;Ctr) = 41 (-4;-11) dB</b>		
Evaluation based on laboratory measurement results obtained by an engineering method:	Max dev. 10.7 dB at 100 Hz		
	$C_{50-3150} = -5$ dB	$C_{50-5000} = -5$ dB	$C_{100-5000} = -3$ dB
	$C_{50-3150} = -15$ dB	$C_{50-4000} = -15$ dB	$C_{50-100-4000} = -11$ dB

TESTED AT ONE OF THE UKAS ACCREDITED LABORATORIES BELOW

B.T.C  
(H-Ref on Graph)



B.R.E



AIRO



S.R.L



Customer: Metsec plc Hepsec Division

BTC 17484A: Page 9 of 11



SPEEDLINE Drywall Systems, Adsetts House, 16 Europa View, Sheffield Business Park, Sheffield, S9 1XH.

Tel: 0114 231 8030.

Email: [enquiries@speedlinedrywall.co.uk](mailto:enquiries@speedlinedrywall.co.uk)

(As per the requirements set out in ISO/IEC 17025:2017 regarding test data the results stated have been carried out by voestalpine Metsec plc as part of the contract to supply Speedline Metal Sections to SIG Plc)